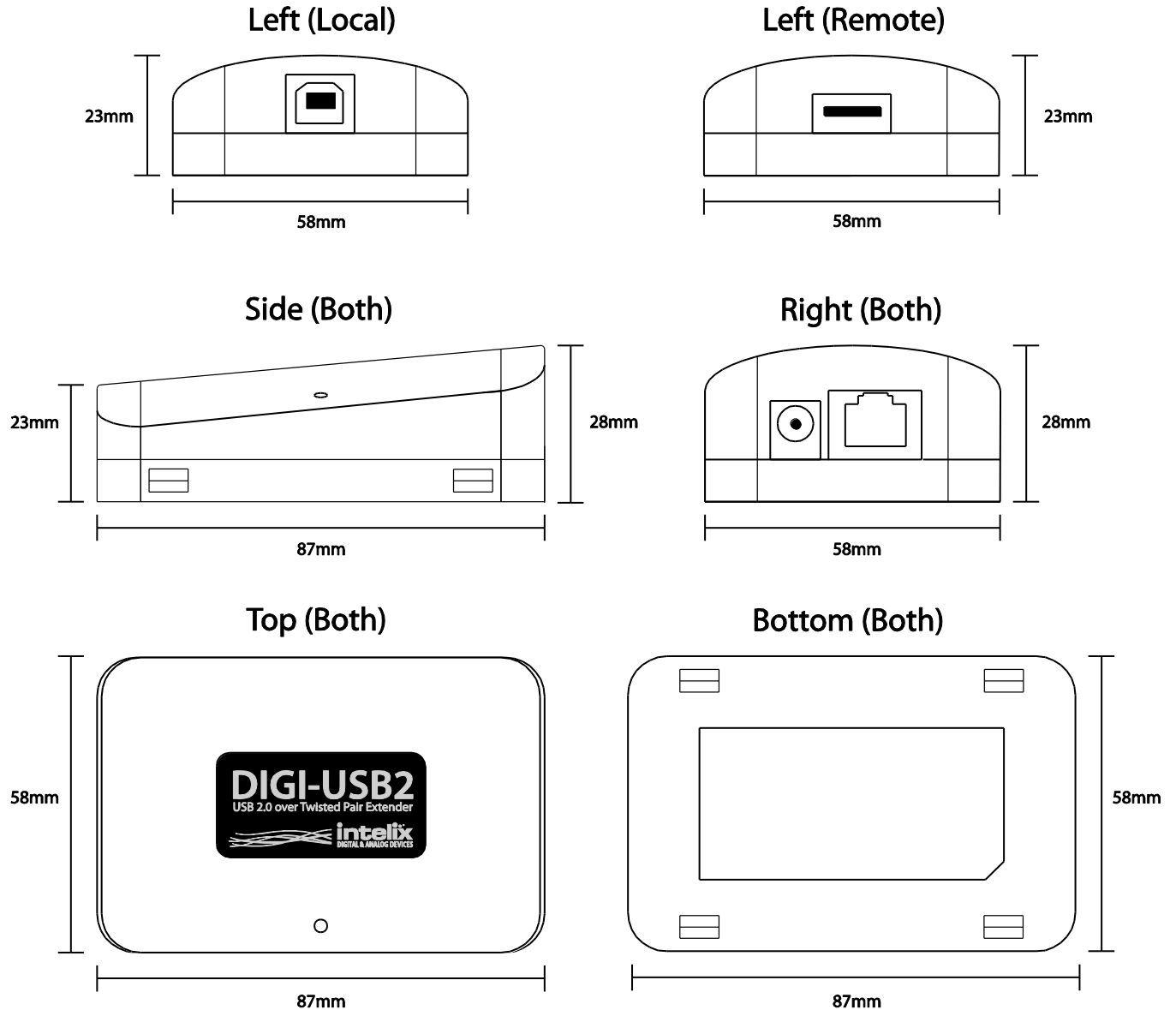


## DIGI-USB2 Technical Specifications

USB 2.0 High Speed Twisted Pair Extender  
Rev. 130211

The Intelix DIGI-USB2 extends computer USB 1.1 and USB 2.0 signals up to 100m (330') over twisted pair cabling. The device can be powered at either the client or host device.



Technical Specifications	
<b>I/O Connections (Local)</b>	
USB	One (1) USB Type B
Twisted Pair	One (1) 8P8C port (Shielded RJ45)
24V DC Power	One (1) 5.5 mm Outside Diameter, 2.1 mm Inside Diameter Barrel
<b>I/O Connections (Remote)</b>	
USB	One (1) USB Type A
Twisted Pair	One (1) 8P8C port (Shielded RJ45)
24V DC Power	One (1) 5.5 mm Outside Diameter, 2.1 mm Inside Diameter Barrel
<b>Maximum Distance</b>	
CAT5E	100m (330')
<b>Supported Signals</b>	
USB 2.0	Up to 480 Mbps
USB 1.1	Up to 12 Mbps
<b>Chassis and Environmental</b>	
Enclosure	Black Rubberized ABS Plastic
Dimensions	87mm x 58mm x 28mm (3.43 in. x 2.26 in. x 1.20 in.)
Shipping Weight	0.45kg (1 lbs.)
Operating Temperature	0° to +50° C (+32° to +122° F)
Operating Humidity	20% to 80%, Non-condensing
Storage Temperature	-20° to +70° C (-4° to +158° F)
Storage Humidity	10% to 90%, Non-condensing
<b>Power, ESD, and Regulatory</b>	
Power to USB Devices	500mA
Maximum Power Consumption	4.3 watts
Power Supply	24vDC
Regulatory	FCC (Class A), CE (Class A), RoHS
<b>Other</b>	
Standard Warranty	2 Years
Included Accessories	USB cable (A to B), US Power Supply and Installation Guide
Mounting	Slots for cable ties

Distances and picture quality may be affected by cable grade, cable quality, source and destination equipment, RF and electrical interference, and cable patches. Intelix specifications are based on straight-through cabling with standard-grade Cat 5e unless noted otherwise.